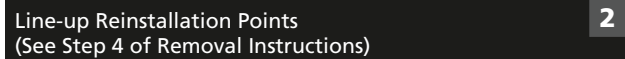




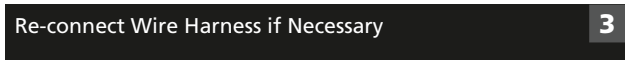
1

With Tail Gate Open and Using 4 Individuals, Place Tonneau Cover onto Truck Bed Rails.



2

Line-up Reinstallation Points (See Step 4 of Removal Instructions)



3

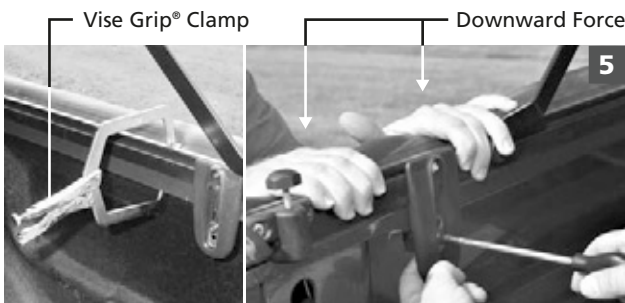
Re-connect Wire Harness if Necessary

Clamp Jaw — M8 Bolt and Stainless Washer



4

Loosely Assemble Clamp Jaw System.



5

RECOMMENDED

OPTIONAL (HAND FORCE)

Apply Downward Pressure on the Rail, Then, Secure Aluminum Rail to Truck by Tightening M8 Bolt.



6

Snap Clamp Cover Plates in Place

LSII LSX

The LSII and the LSX are the ultimate in custom fitted hard tonneau covers for today's pickups. A.R.E. designed each model to match the curvature and style lines of the pickup it is made to fit. Compound curves add strength as well as style.



A.R.E.
P.O. Box 1100
Massillon Ohio 44648
1.800.649.4ARE • 1.330.830.7878
Fax: 1.330.830.7848
Web Site: www.4ARE.com
E-mail: topline@4ARE.com

ADDITIONAL INFORMATION

For care and maintenance information, for warranty information, and for warranty registration, please consult your warranty and care instruction flyer, or visit www.4are.com

Form # 484 4/08

A.R.E. Part Number 18001

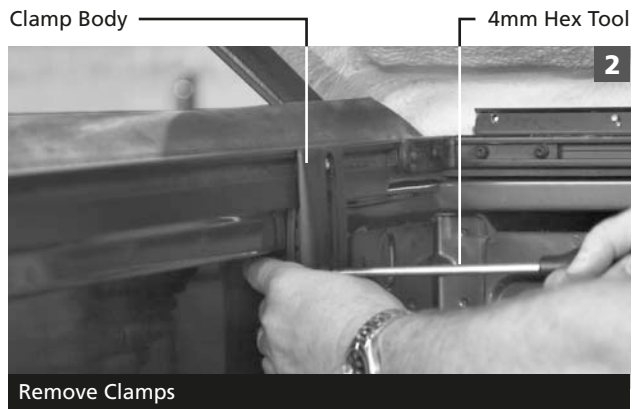
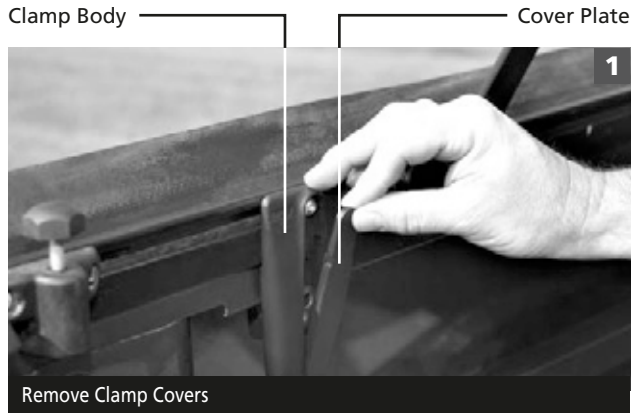
LSII



LSX



REMOVAL AND REINSTALLATION



**LSII
LSX**

- Do Not Drive with Tonneau Cover in Open Position 1
- Never Transport Passengers in Truck Bed 2
- Do not Occupy While Vehicle is Running 3

